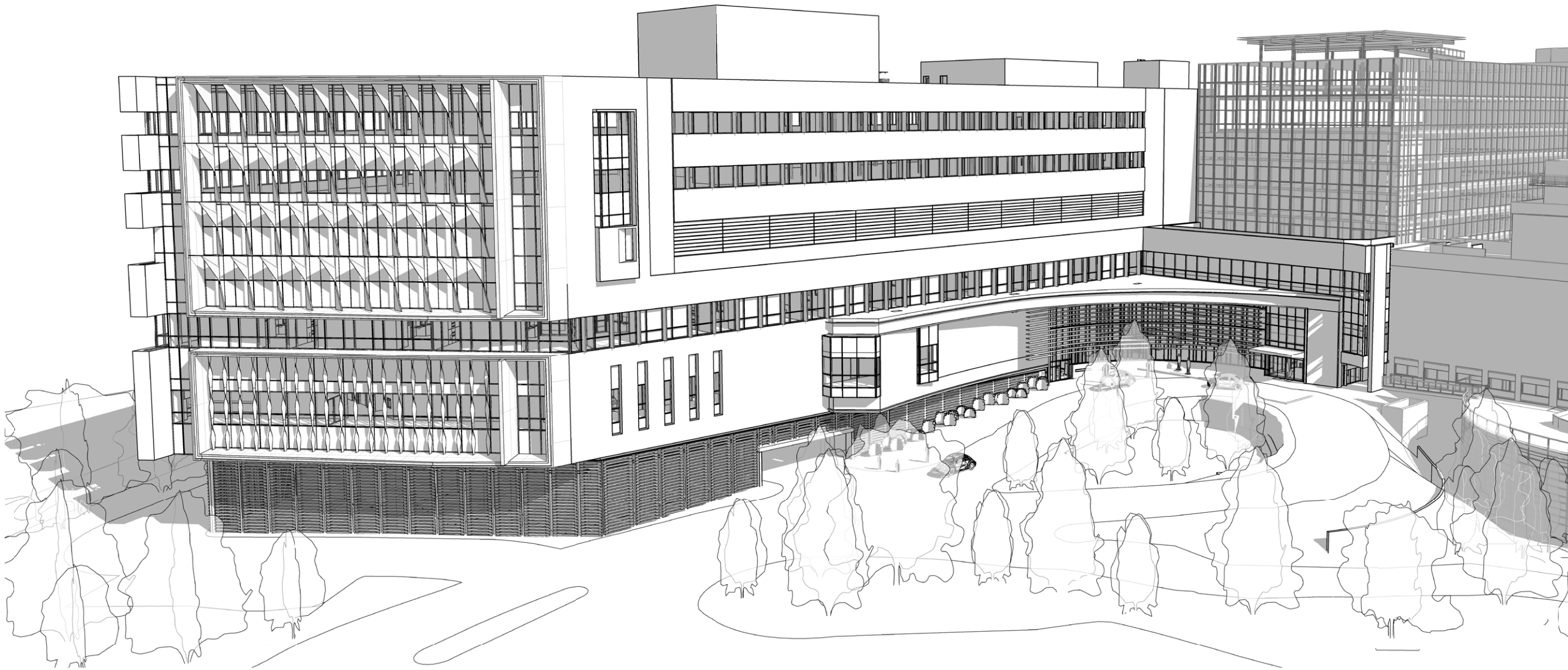


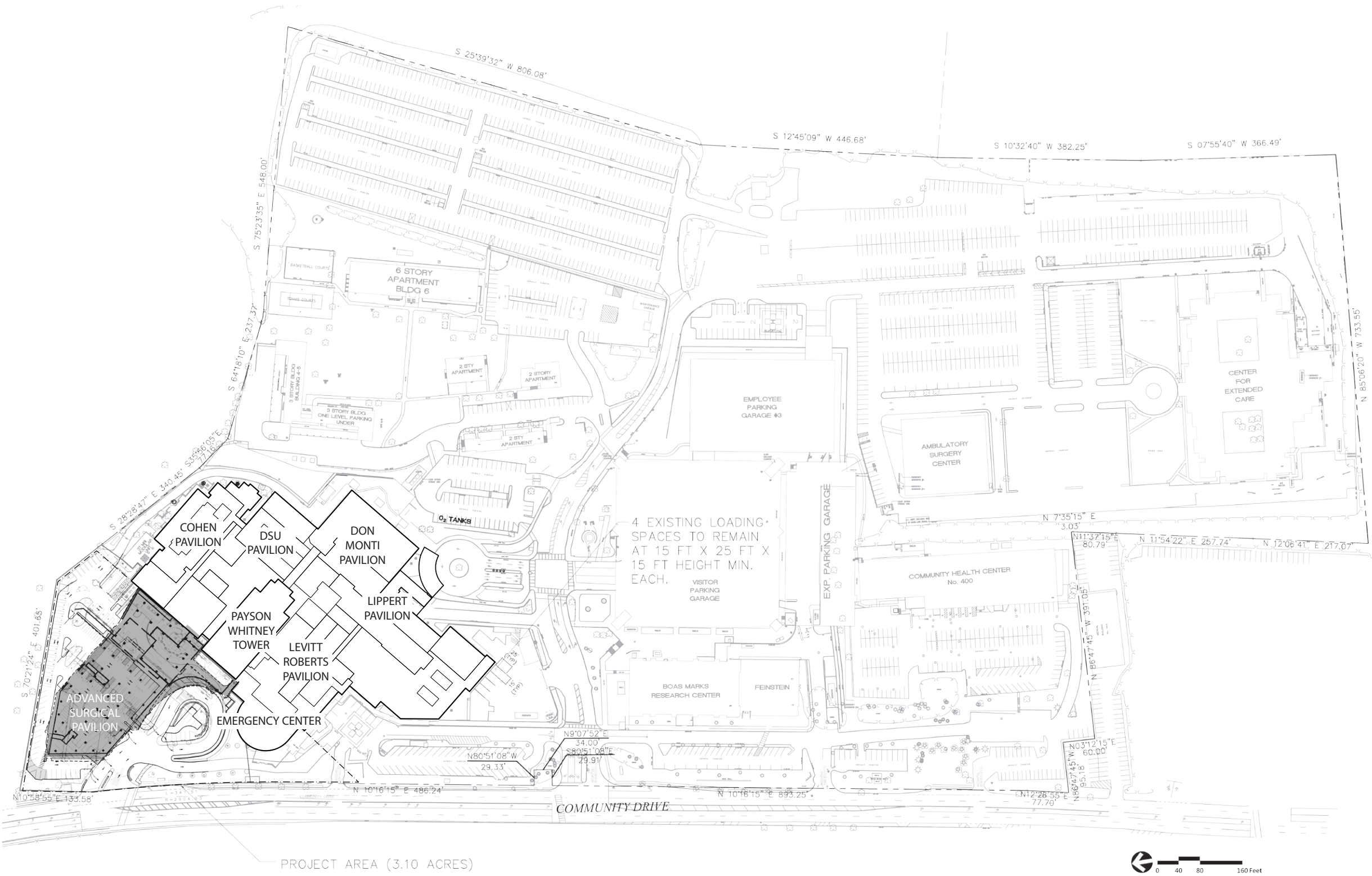
# NORTH SHORE UNIVERSITY HOSPITAL

## Advanced Surgical Pavilion Project

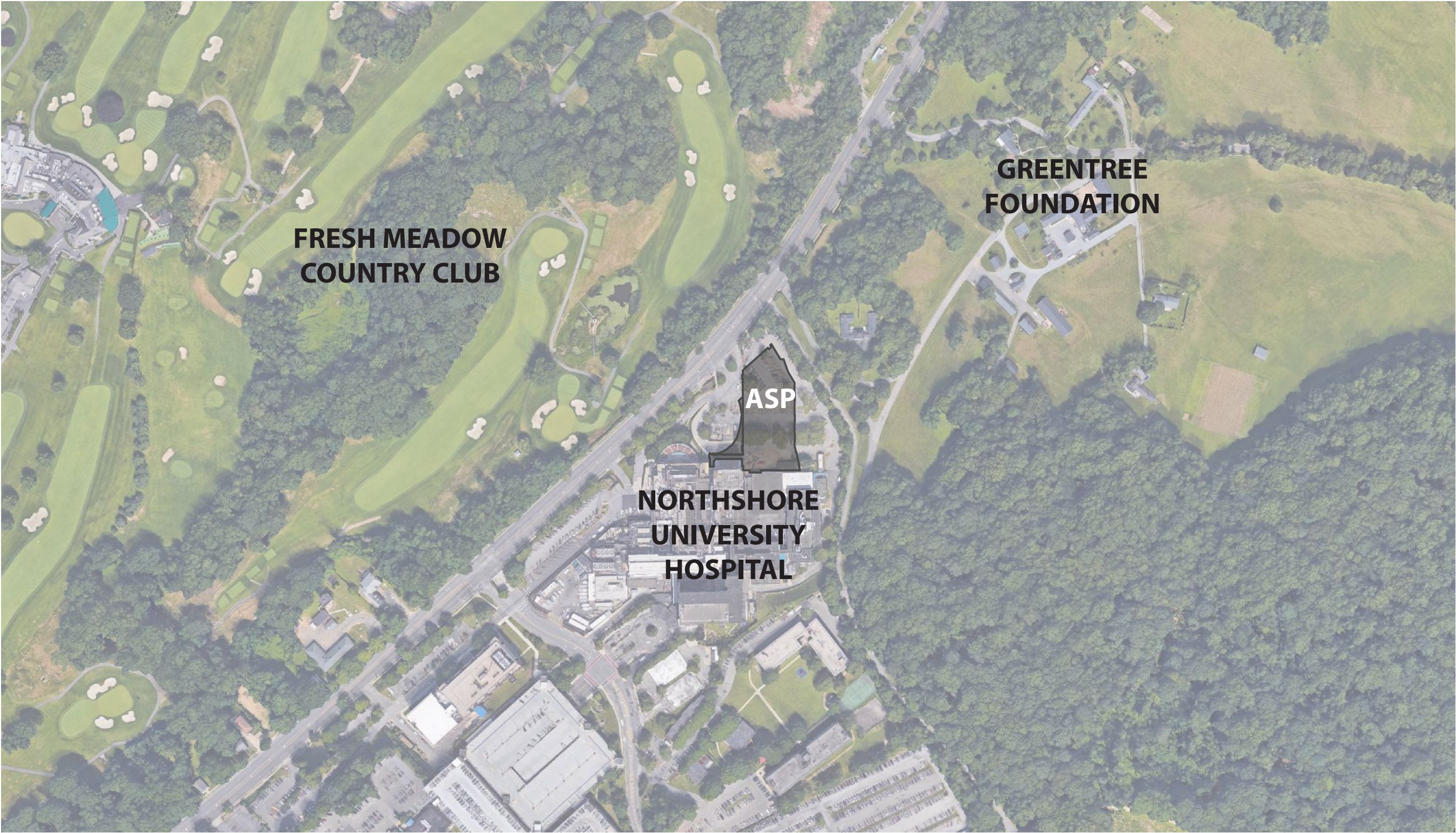
Council of Greater Manhasset Civic Association Presentation

January 10, 2018

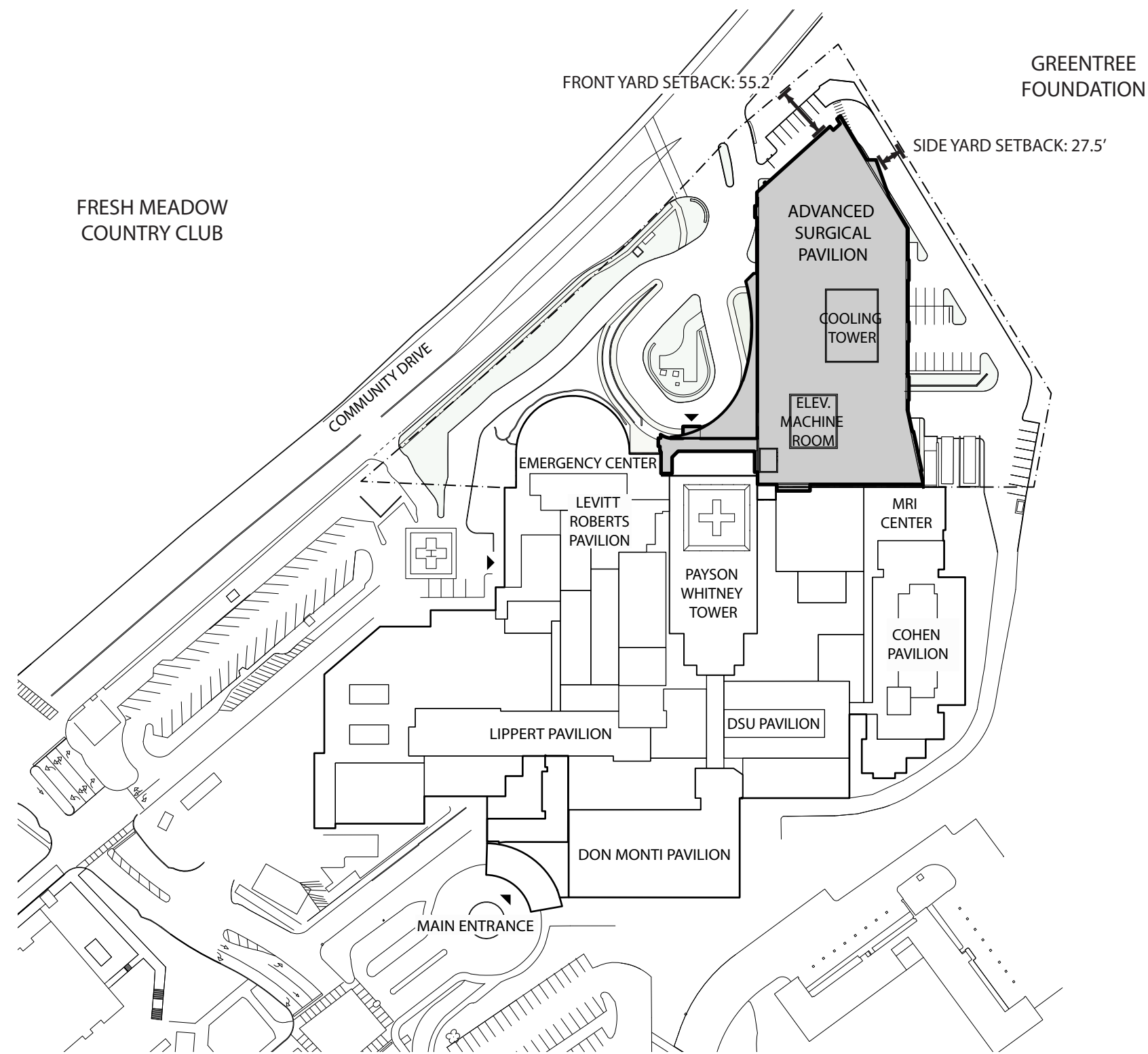






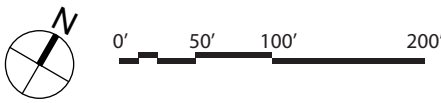






BUILDING HEIGHTS		
ASP		
COOLING TOWER		138'-8"
MACHINE ROOM ROOF		122'-8"
PARAPET		111'-8"
DON MONTI PAVILION		126'-2"
PAYSON WHITNEY TOWER		121'-10"
HELIPAD		131'-10 1/2"

\*ALL HEIGHTS ARE RELATIVE TO AVERAGE FINISH GRADE ESTABLISHED FOR ASP PROJECT. AVERAGE FINISH H GRADE = 97'-4 1/2"



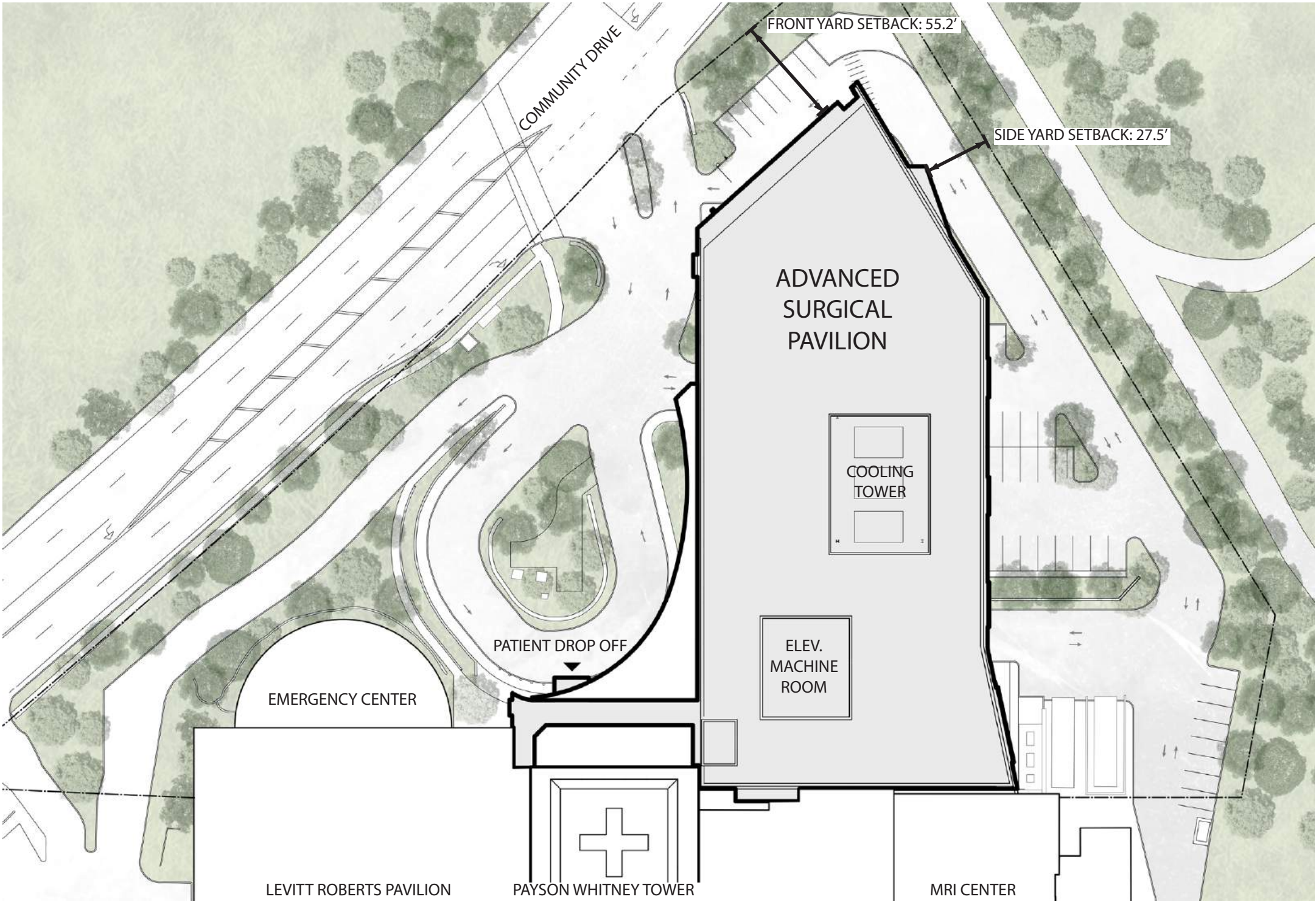




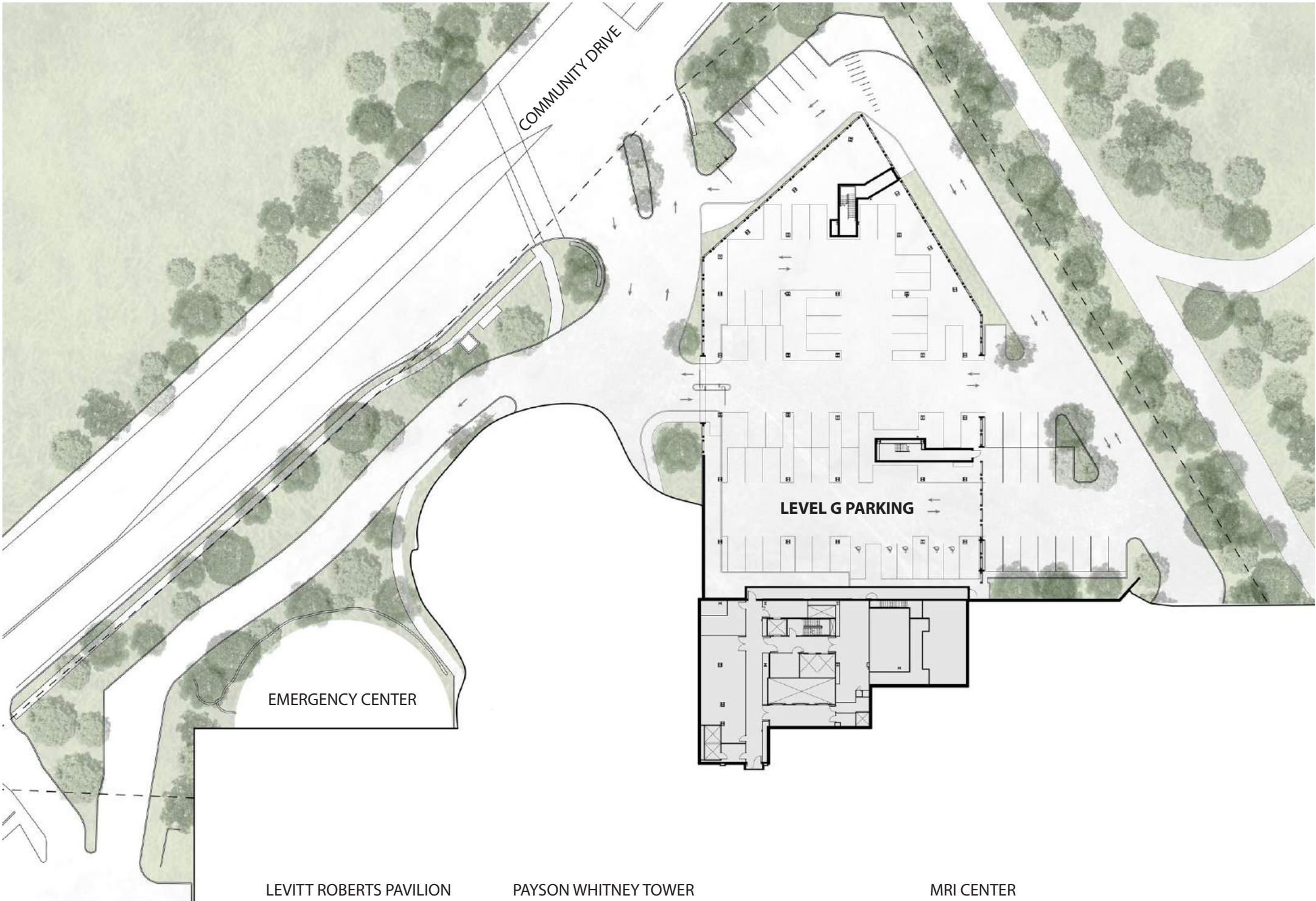




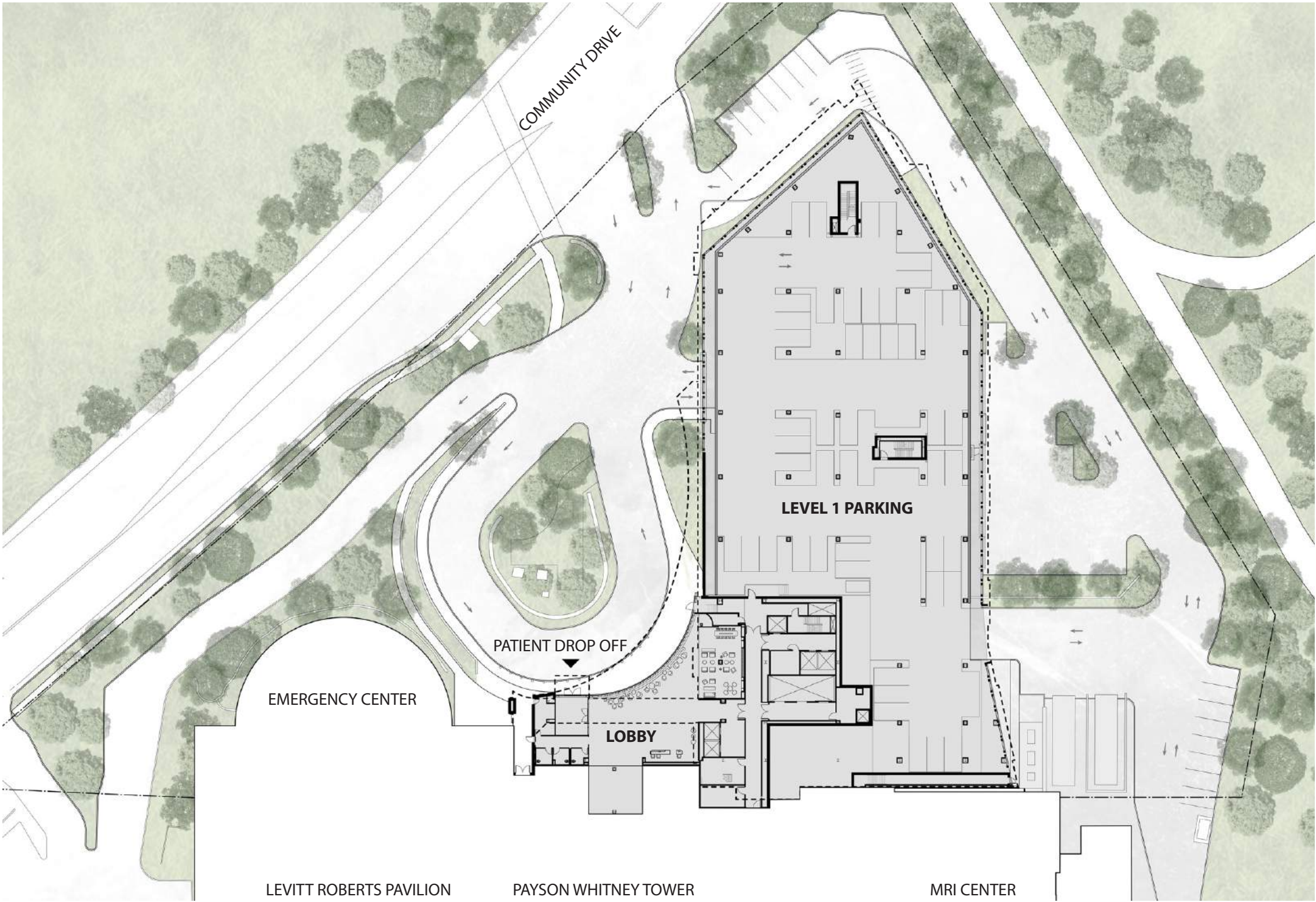




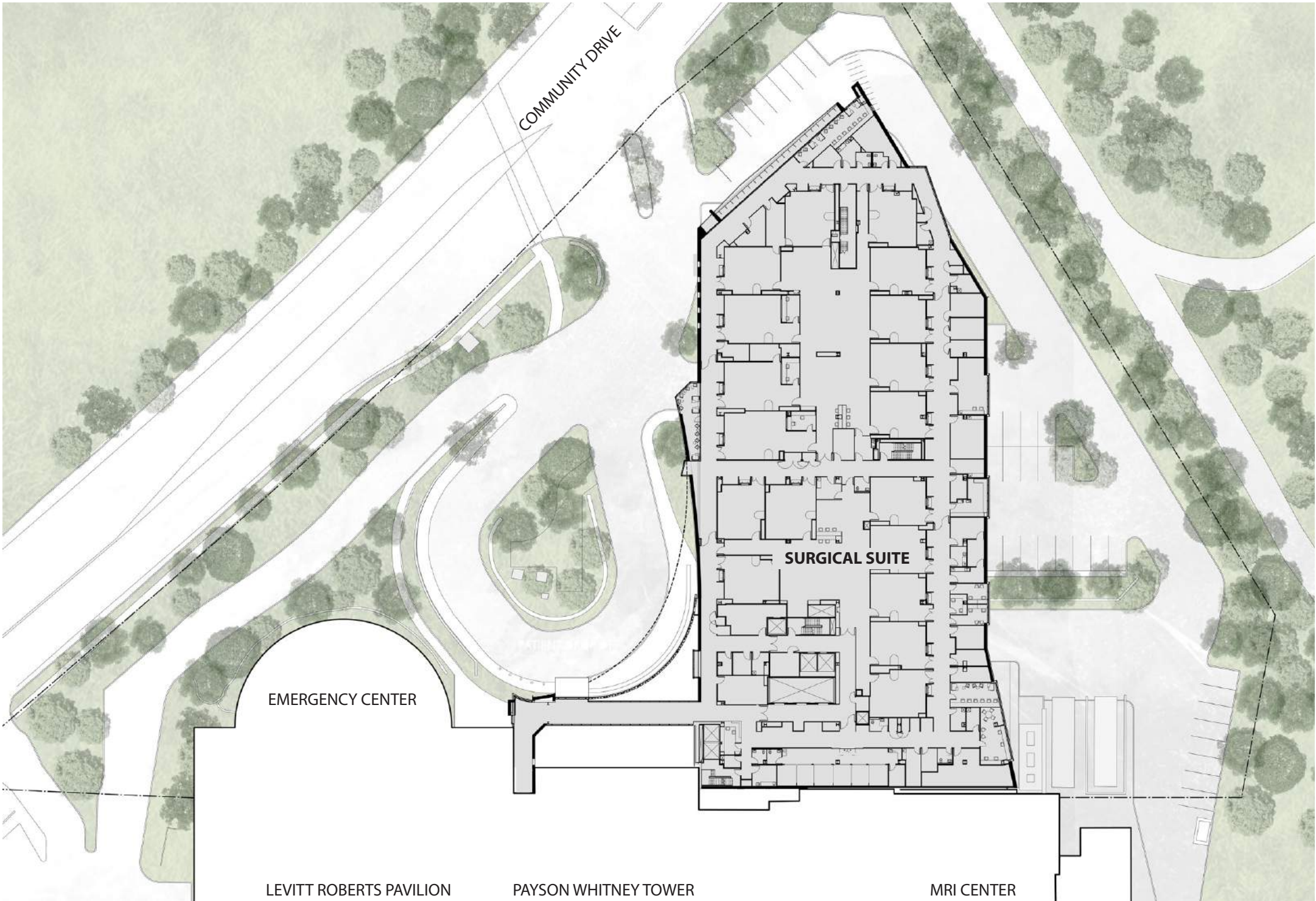




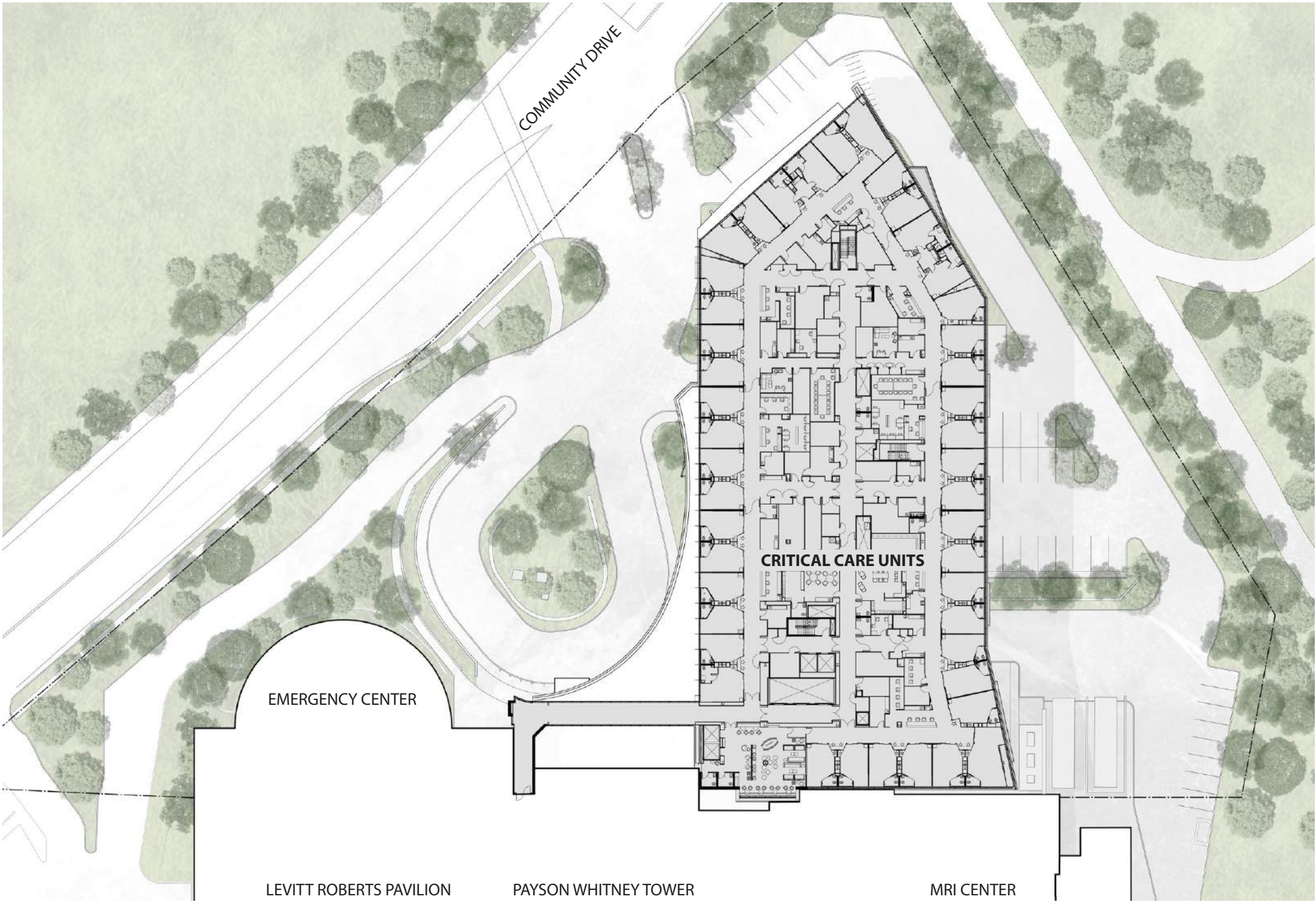




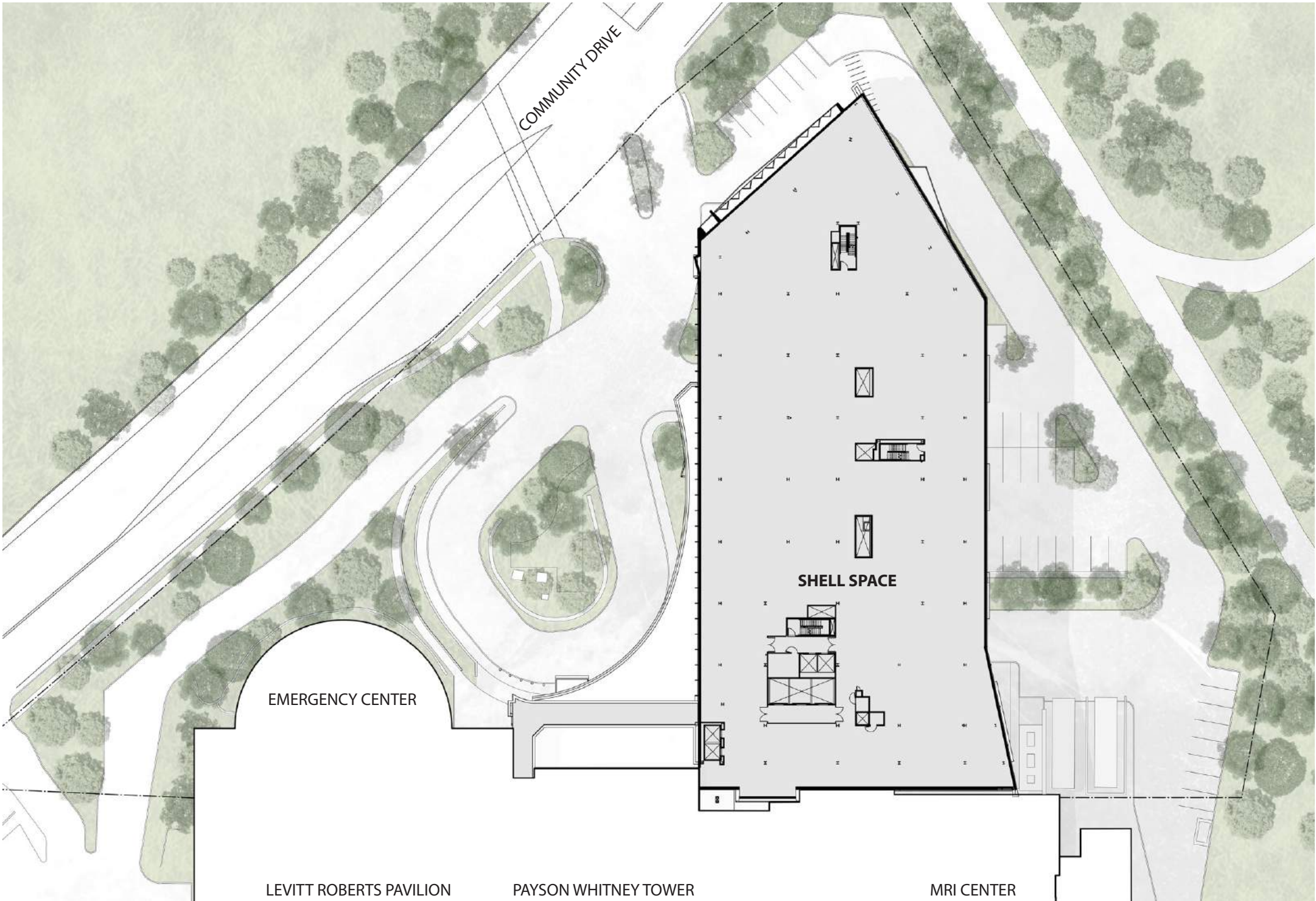




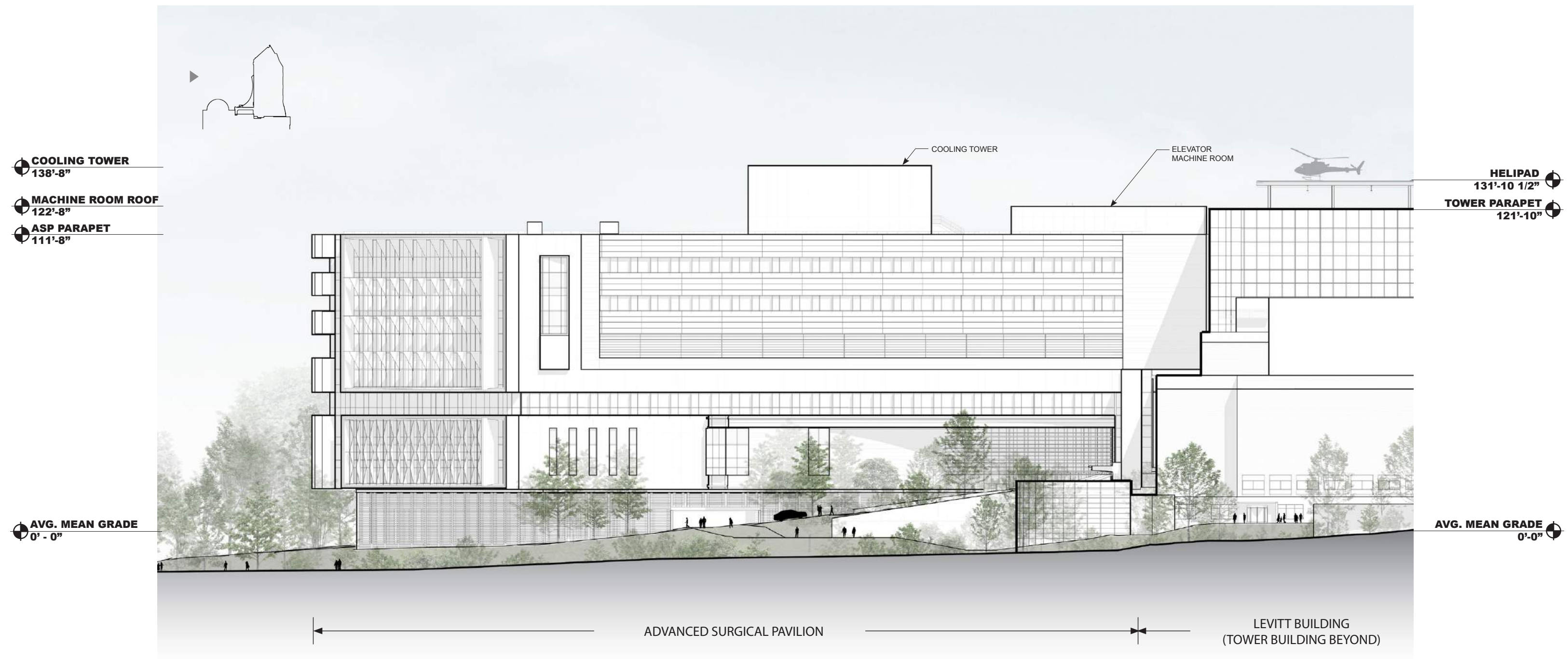








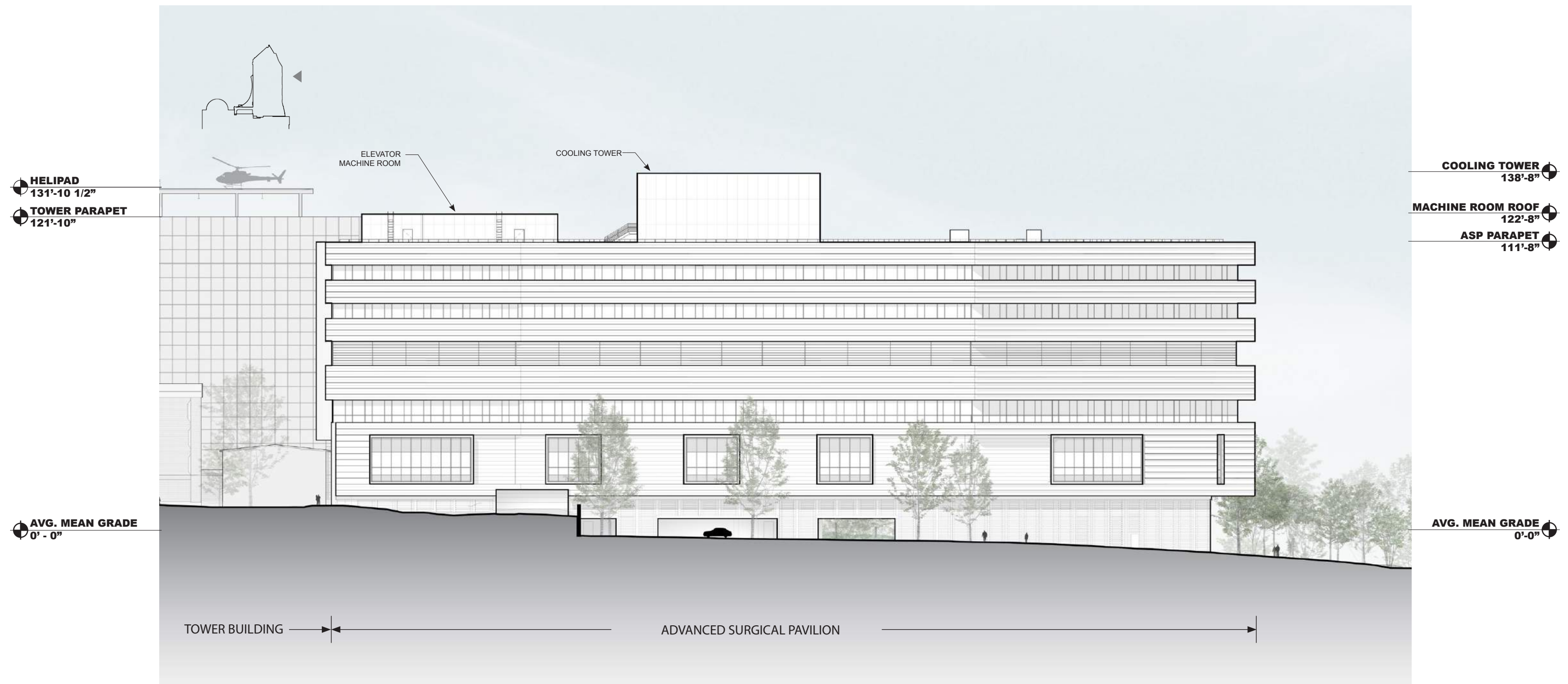




\*ALL HEIGHTS ARE SHOWN RELATIVE TO AVERAGE FINISH GRADE.  
AVERAGE MEAN GRADE = 97'-4 1/2"

0' 50' 100'





\*ALL HEIGHTS ARE SHOWN RELATIVE TO AVERAGE FINISH GRADE.  
AVERAGE MEAN GRADE = 97'-4 1/2"



