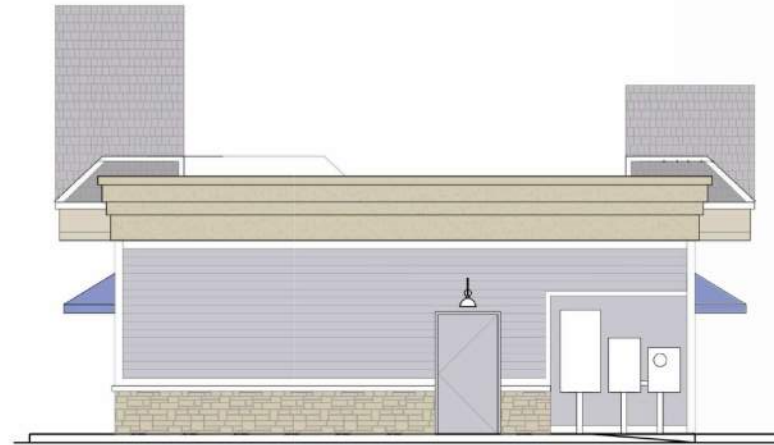


1 ELEVATION: NORTH
 A200 Scale: 1/4" = 1'-0"



2 ELEVATION: WEST
 A200 Scale: 1/4" = 1'-0"



3 ELEVATION: EAST
 A200 Scale: 1/4" = 1'-0"



4 ELEVATION: SOUTH
 A200 Scale: 1/4" = 1'-0"

