

PUBLIC MEETING

March 15, 2007

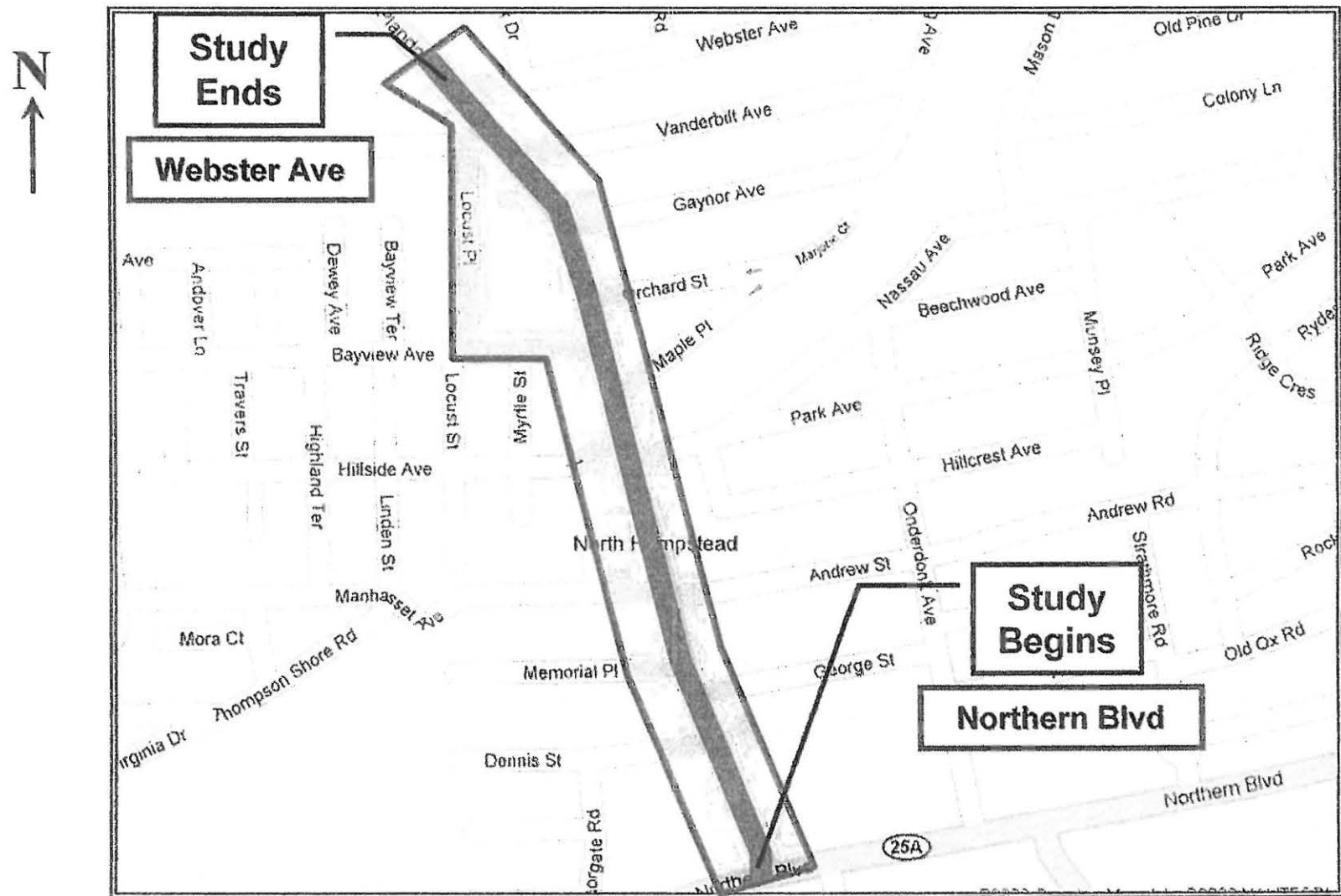
PLANDOME ROAD TRAFFIC & PARKING STUDY

**Northern Boulevard (NY 25A) to Webster Avenue
Manhasset, Town of North Hempstead
Nassau County**



PLANDOME ROAD TRAFFIC & PARKING STUDY

STUDY AREA



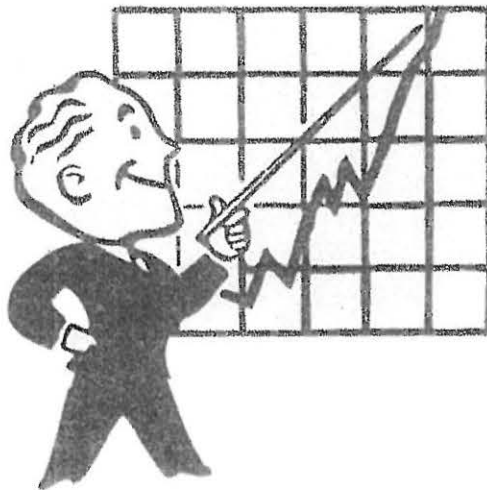
STUDY OBJECTIVES

- 1) Develop an understanding of current traffic, pedestrian, and parking conditions.**
- 2) Provide recommendations and conceptual design schemes to improve the corridor.**
- 3) Use this information as a planning tool for the on-going community visioning process.**

PLANDOME ROAD TRAFFIC & PARKING STUDY

Presentation Format

Data Collection

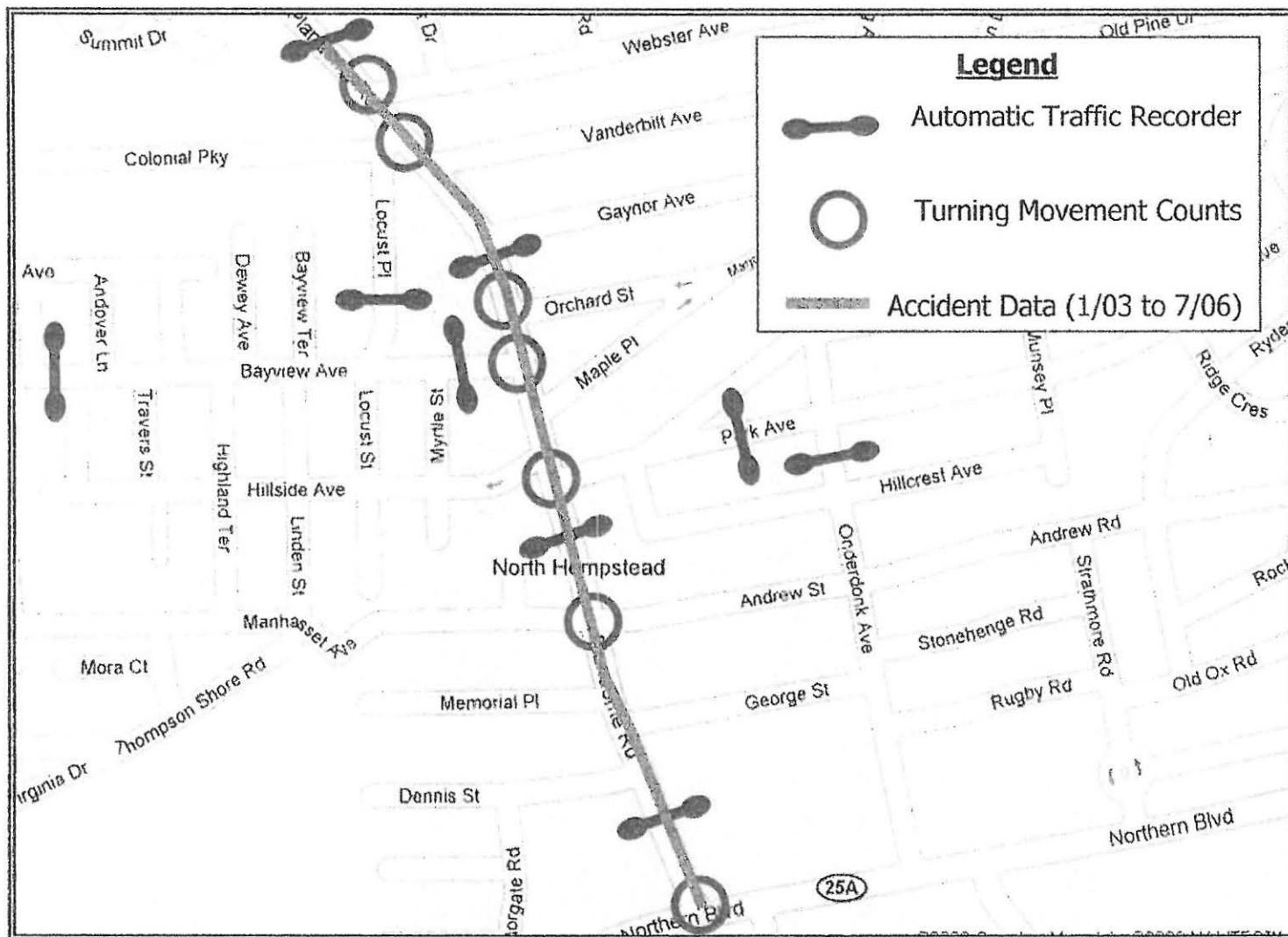


Study Findings

Concepts & Recommendations

PLANDOME ROAD TRAFFIC & PARKING STUDY

DATA COLLECTION – Traffic / Accidents



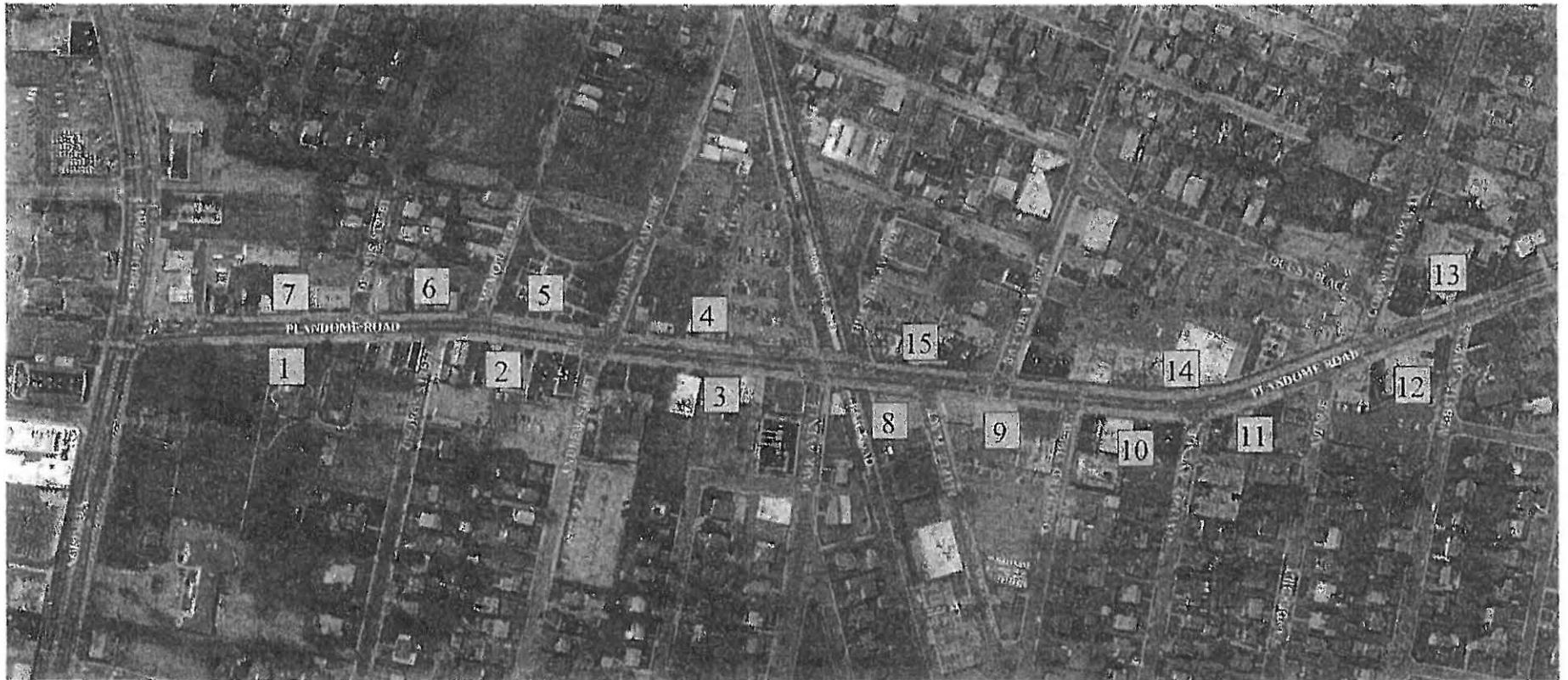
PLANDOME ROAD TRAFFIC & PARKING STUDY

DATA COLLECTION – Parking (off-street)



PLANDOME ROAD TRAFFIC & PARKING STUDY

DATA COLLECTION – Parking (on-street)



PLANDOME ROAD TRAFFIC & PARKING STUDY

DATA COLLECTION - site observations

Long Traffic Queues



Inconsistent Parking Signage and Restrictions



Narrow Sidewalks



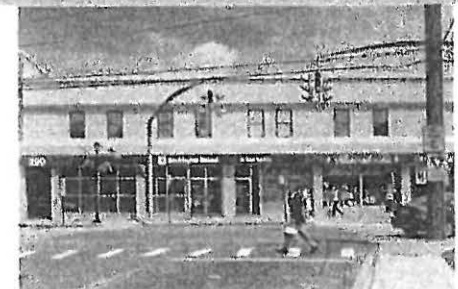
On-Street Parking Issues



Wide Travel Lanes



Pedestrian Safety Concerns



PROJECT FACTS

Did you know?

- Approx. 10,000 to 15,000 vehicles drive through the project area every weekday.
- The highest traffic volumes occur on weekdays from 4:45 to 5:45 pm.
- The accident rate for this segment of roadway is nearly 5 times the statewide average.
- Posted speed limit is 30 mph. Average speeds during rush hour are less than 20 mph.
- There are approximately 170 on-street parking stalls along Plandome Road.
- There are over 1,200 off-street parking stalls in the study area.
- Nearly 3,000 students attend school in the area.

PLANDOME ROAD TRAFFIC & PARKING STUDY

FINDINGS – Traffic

PARK AVENUE/LIRR STATION DRIVEWAY



	EXISTING	2011	2016
AM	C	C	C
MID	D	D	D
PM	C	D	D
SAT	C	C	C

ORCHARD STREET

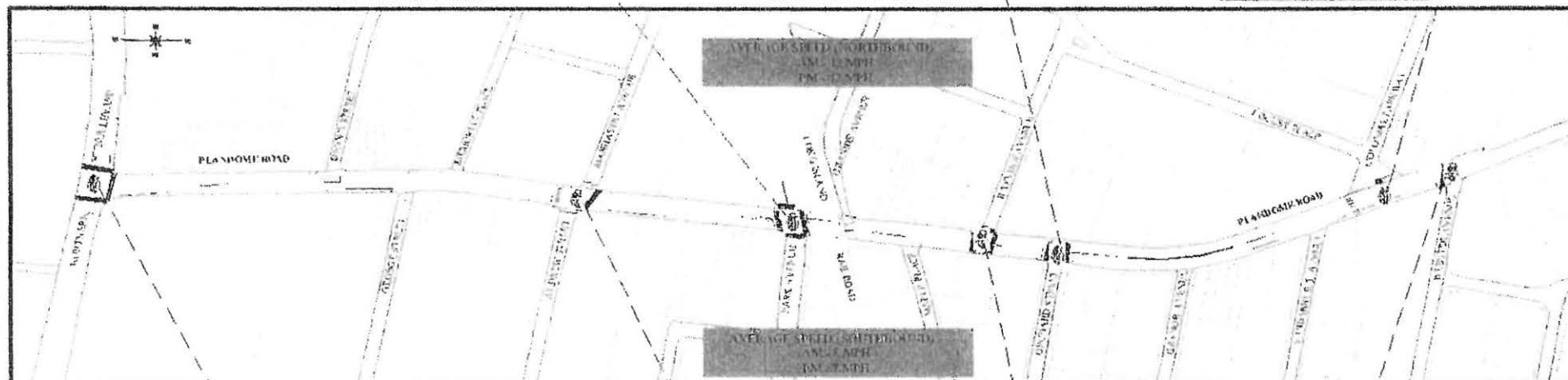


	EXISTING	2011	2016
AM	C	C	C
MID	D	C	C
PM	D	D	D
SAT	C	C	C

COLONIAL PARKWAY



	EXISTING	2011	2016
AM	C	D	D
MID	C	C	C
PM	D	D	D
SAT	C	C	C



NORTHERN BOULEVARD (RT 25A)



	EXISTING	2011	2016
AM	D	D	D
MID	D	D	D
PM	D	D	D
SAT	D	D	D

ANDREW STREET/MANHASSET AVENUE



	EXISTING	2011	2016
AM	D	C	C
MID	D	D	D
PM	C	C	C
SAT	D	D	D

BAYVIEW AVENUE



	EXISTING	2011	2016
AM	C	C	C
MID	C	C	C
PM	D	D	D
SAT	C	C	D

WEBSTER AVENUE



	EXISTING	2011	2016
AM	D	D	D
MID	D	D	D
PM	D	D	C
SAT	D	D	D



SUMMARY OF ACCIDENTS

PLANDOME ROAD
TRAFFIC AND PARKING STUDY
TOWN OF NORTH HEMPSTEAD
NASSAU COUNTY, NY



LEGEND	
	HIGH ACCIDENT INTERSECTIONS (GREATER THAN 5 ACCIDENTS PER 12 MONTH PERIOD.)
	NUMBER OF ACCIDENTS

NUMBER OF ACCIDENTS BY INTERSECTION

LOCATION	NUMBER OF ACCIDENTS
NORTHERN BOULEVARD (RT.25A)	76
GEORGE STREET/MEMORIAL PLACE	28
ANDREW STREET/MANHASSET AVENUE	26
BAYVIEW AVENUE	27
PARK AVENUE/LIRR STATION DRIVEWAY	23
ORCHARD STREET	16
GAYNOR AVENUE	18
DENNIS STREET	13
VANDERBILT AVENUE	12
WEBSTER AVENUE	11
MAPLE PLACE	7
COLONIAL PARKWAY	6
HILLSIDE AVENUE	6
TOTAL	269

SUMMARY OF ACCIDENTS BY TYPE

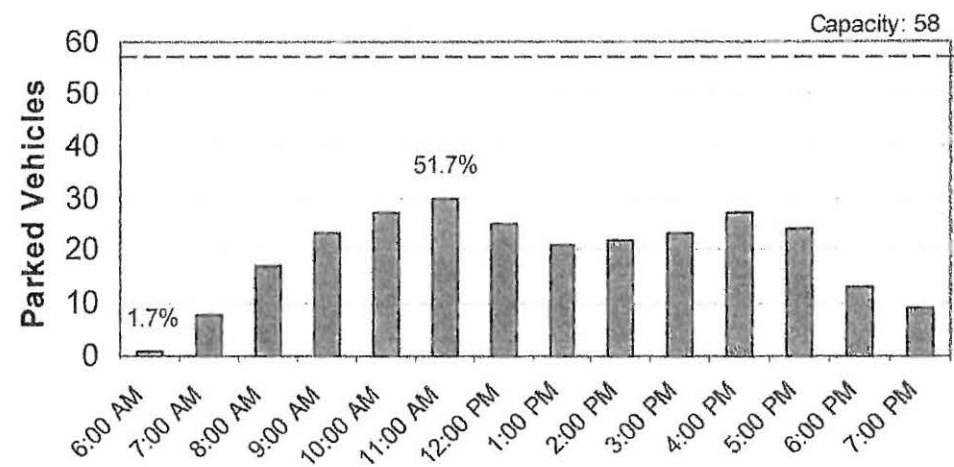
TYPE OF ACCIDENT	NUMBER OF ACCIDENTS
REAR END	105
PARKED VEHICLE	62
OVERTAKING	19
BACKING	20
RIGHT ANGLE	25
LEFT TURN	16
PEDESTRIAN	10
OTHER	6
SIDESWIPE	5
FIXED OBJECT	1
TOTAL	269

PLANDOME ROAD TRAFFIC & PARKING STUDY

FINDINGS – Parking



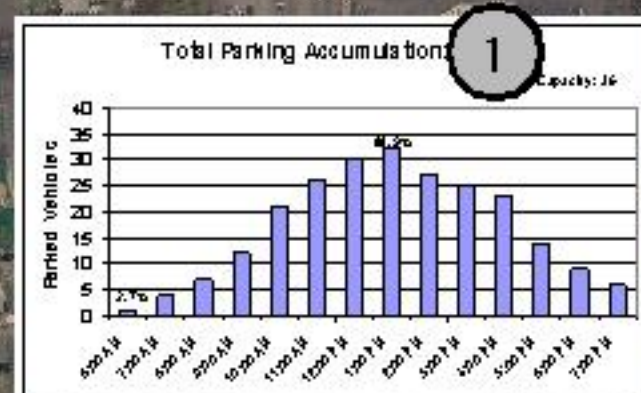
Total Parking Accumulation: Lot 2



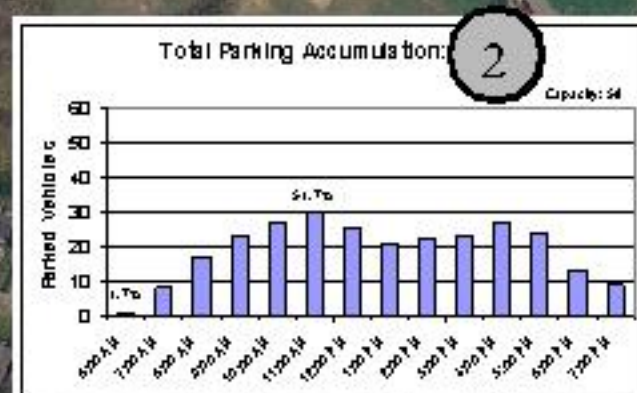


PARKING LOT UTILIZATION WEEKDAY

PLANDOME ROAD
TRAFFIC AND PARKING STUDY
TOWN OF NORTH HEMPSTEAD
NASSAU COUNTY, NY



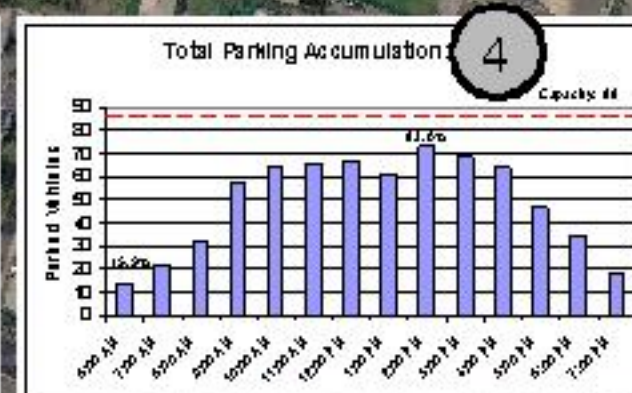
MANHASSET PARK DISTRICT



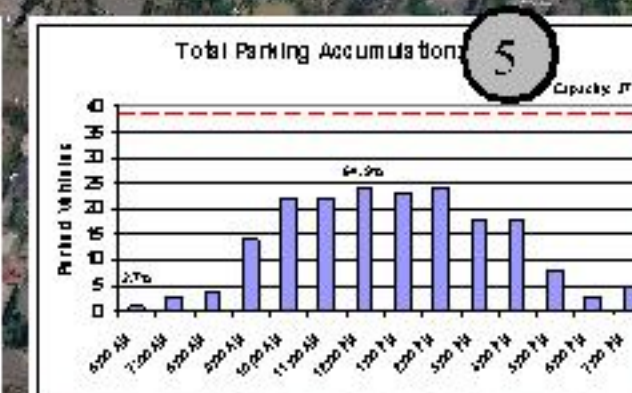
COMMUNITY REFORM CHURCH



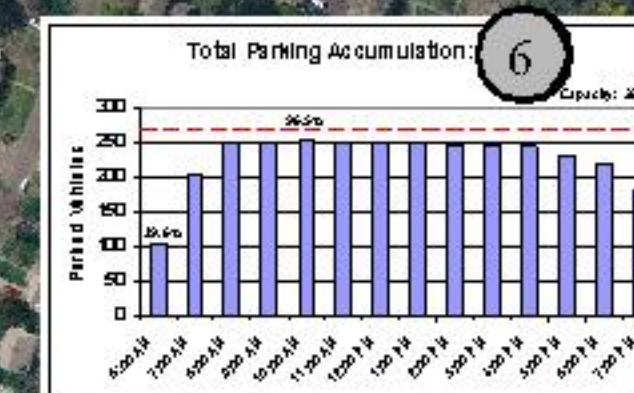
TOWN OF NORTH HEMPSTEAD



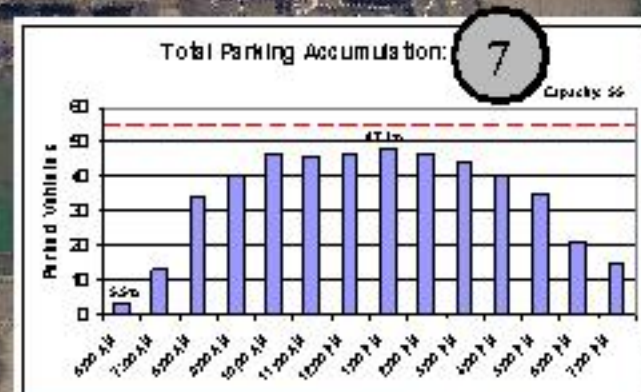
TOWN OF NORTH HEMPSTEAD



BANK OF AMERICA



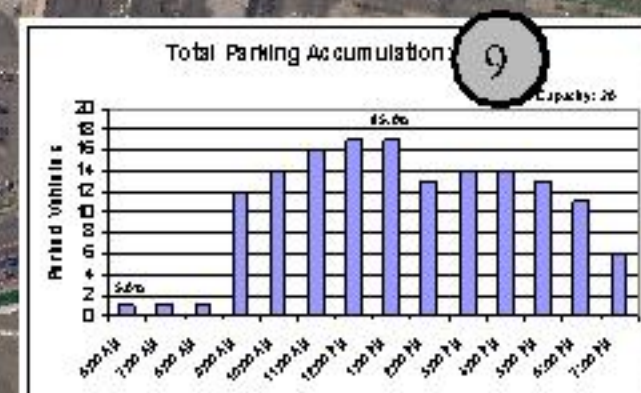
MANHASSET PARK DISTRICT



PRIVATE



MANHASSET PARK DISTRICT



MARY JANE DAVIES (PRIVATE)



ECKERD



MANHASSET PARK DISTRICT



MANHASSET PARK DISTRICT



AMERICAN LEGION POST 304



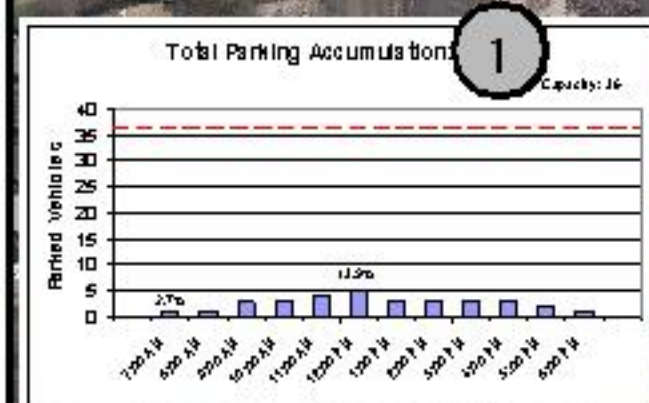
MANHASSET PARK DISTRICT



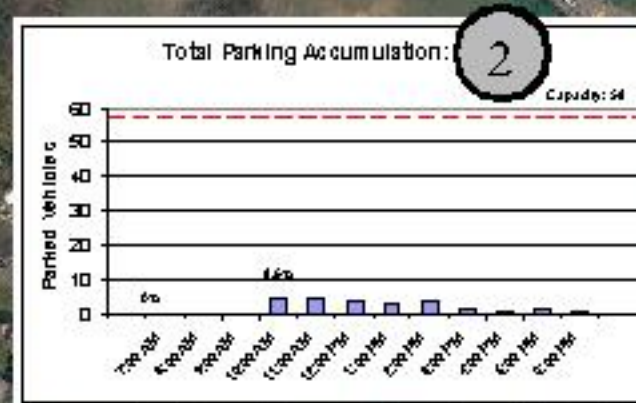
PRIVATE



PLANDOME ROAD
TRAFFIC AND PARKING STUDY
TOWN OF NORTH HEMPSTEAD
NASSAU COUNTY, NY



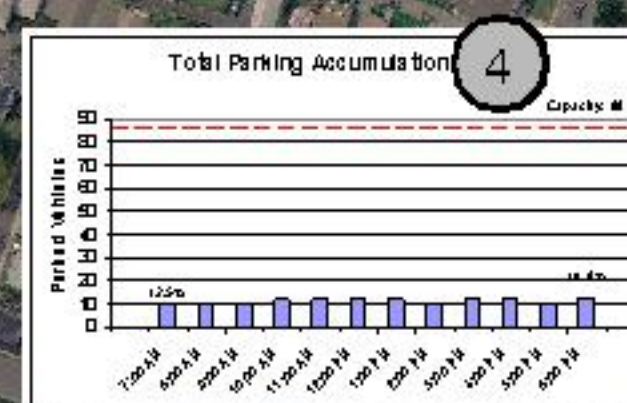
MANHASSET PARK DISTRICT



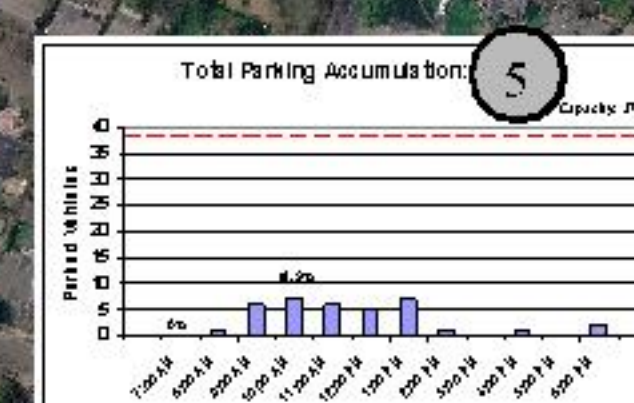
COMMUNITY REFORM CHURCH



TOWN OF NORTH HEMPSTEAD



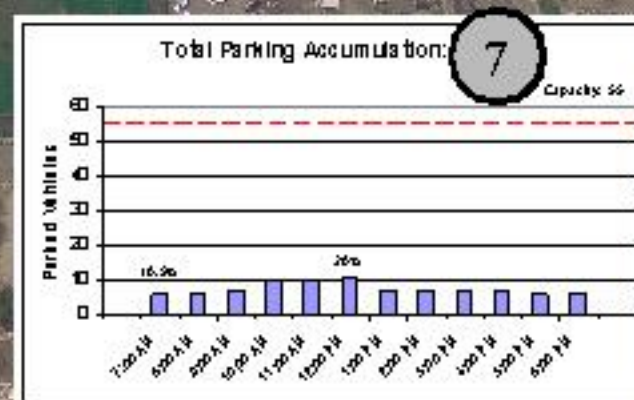
TOWN OF NORTH HEMPSTEAD



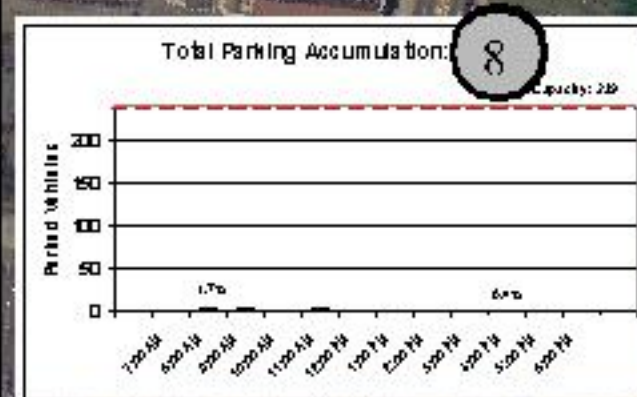
BANK OF AMERICA



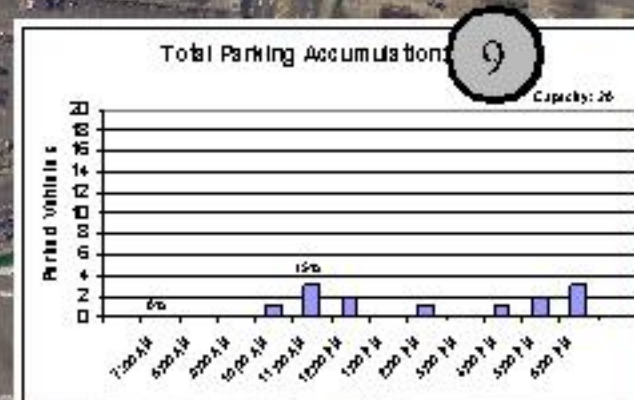
MANHASSET PARK DISTRICT



PRIVATE.



MANHASSET PARK DISTRICT



MARY JANE DAVIES (PRIVATE)



ECKERD



MANHASSET PARK DISTRICT



MANHASSET PARK DISTRICT



AMERICAN LEGION POST 304

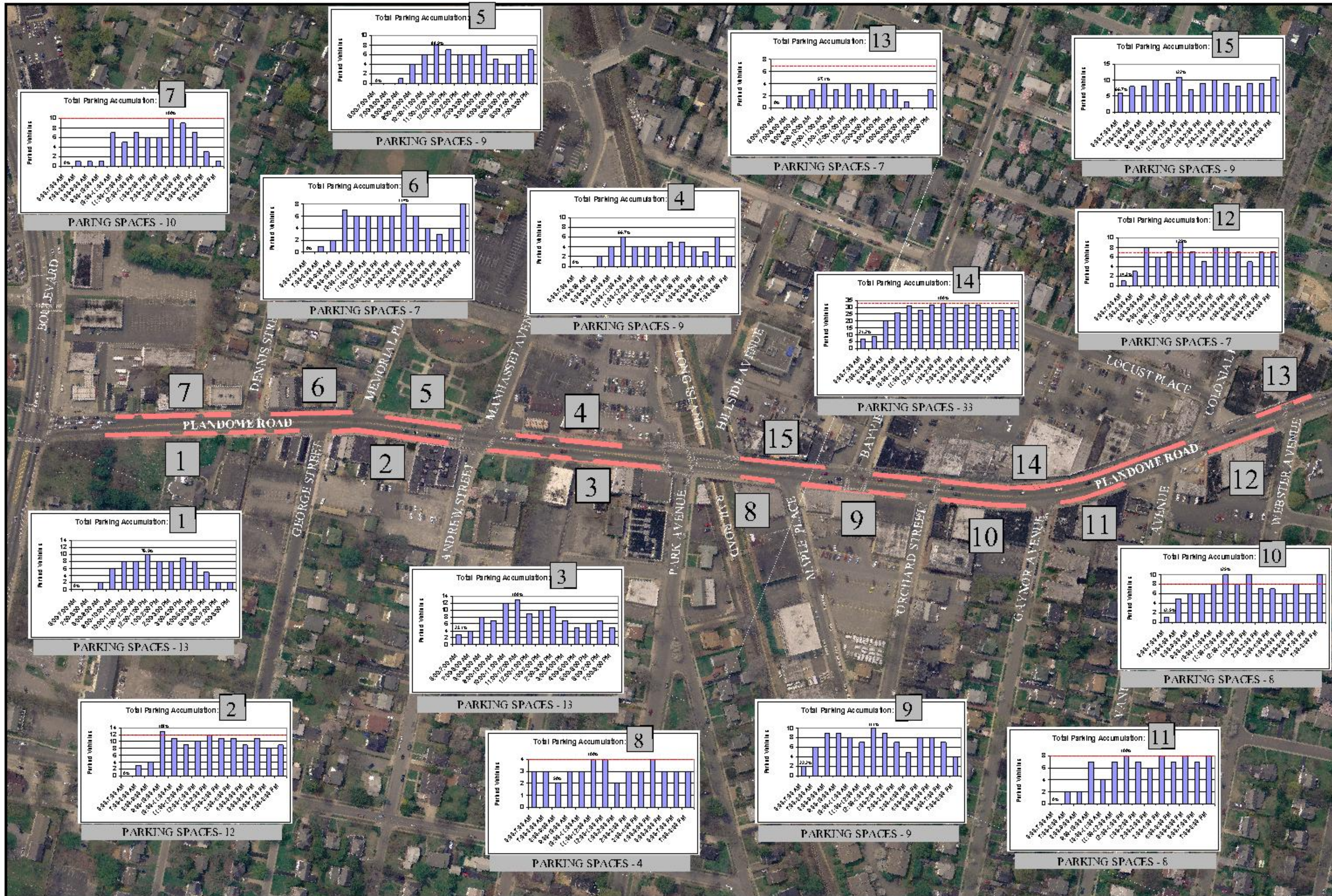


PRIVATE.



ON STREET PARKING UTILIZATION - WEEKDAY

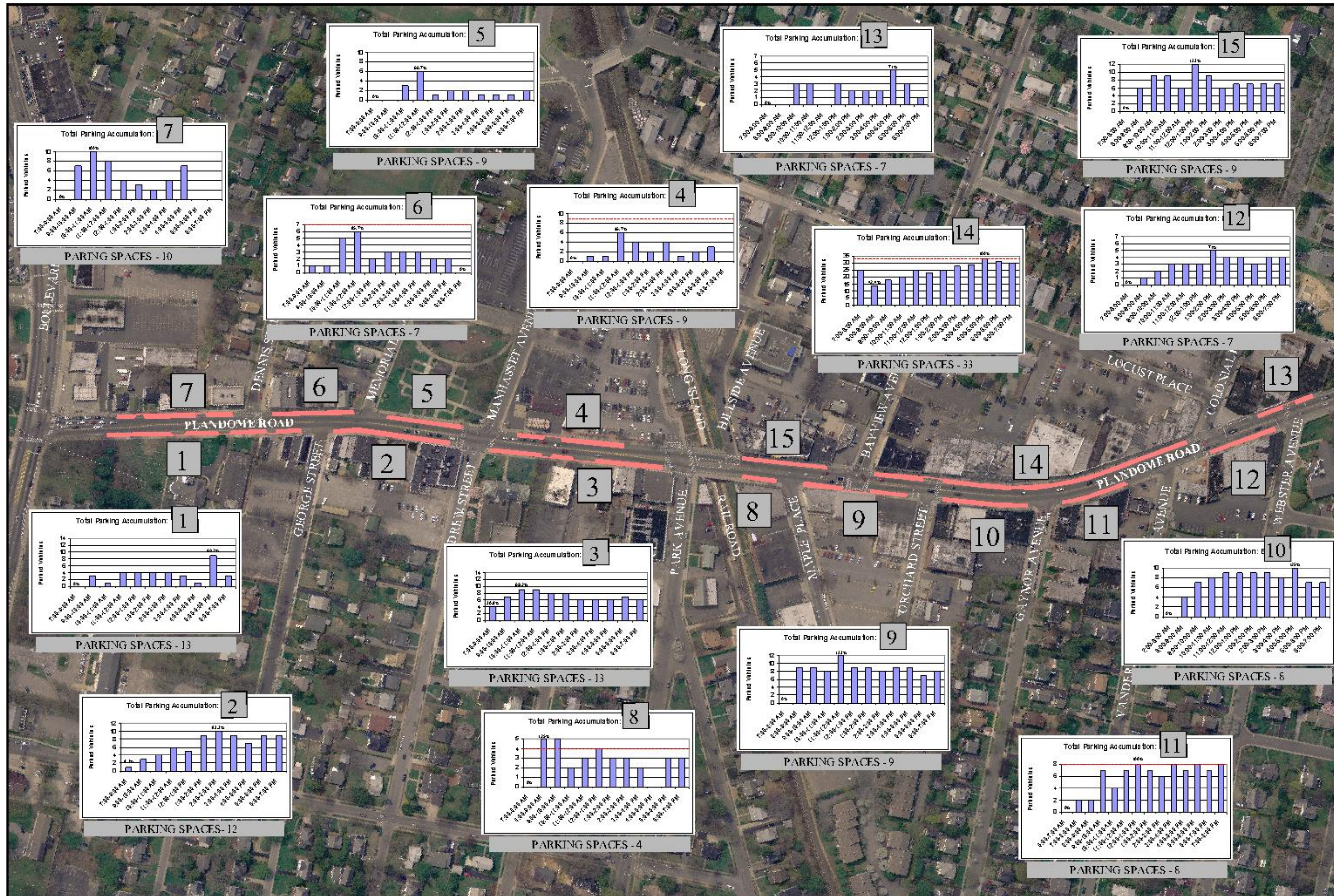
PLANDOME ROAD
TRAFFIC AND PARKING STUDY
TOWN OF NORTH HEMPSTEAD
NASSAU COUNTY, NY





ON STREET PARKING UTILIZATION - WEEKEND

PLANDOME ROAD
TRAFFIC AND PARKING STUDY
TOWN OF NORTH HEMPSTEAD
NASSAU COUNTY, NY





PLANDOME ROAD-TRAFFIC AND PARKING STUDY

PROPOSED IMPROVEMENTS

TOWN OF NORTH HEMPSTEAD
NASSAU COUNTY, NY



NORTHERN BOULEVARD
TO LIRR STATION

STUDY AREA

NEW CROSSWALKS (TYP.)

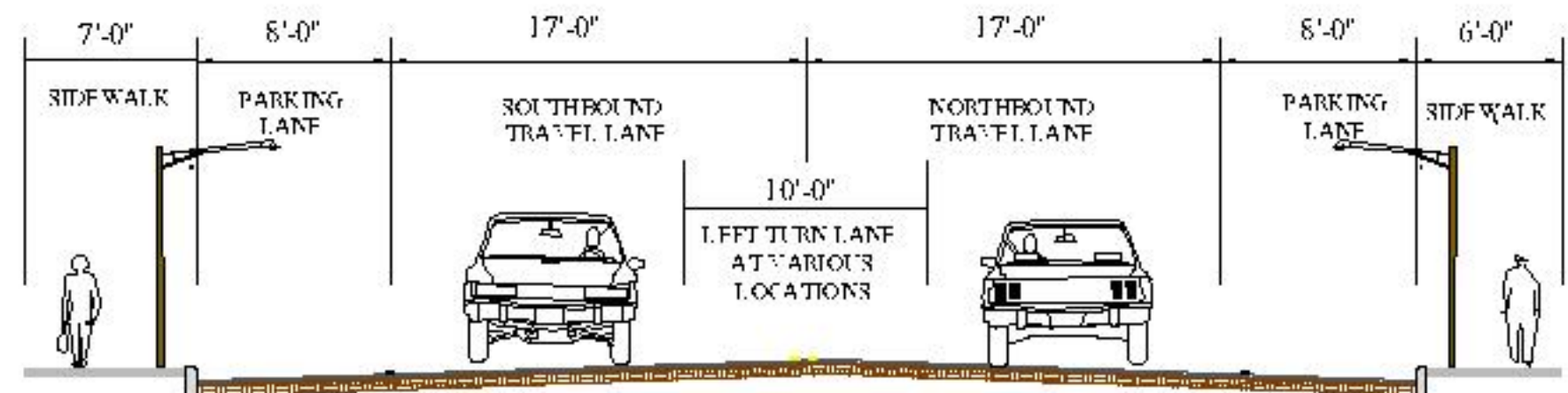


PROPOSED PLAN

INCREASED STORAGE
LENGTH

10' WIDE
LEFT TURN LANE (TYP.)

COUNTDOWN PEDESTRIAN
SIGNAL (TYP.)



PROPOSED CROSS SECTION



Imagine

COUNTDOWN PEDESTRIAN
SIGNAL (TYP.)

Y AVENUE TO
L PARKWAY

COLORLED/TEXTURED
INTERSECTION

BULBOUTS (TYP.)

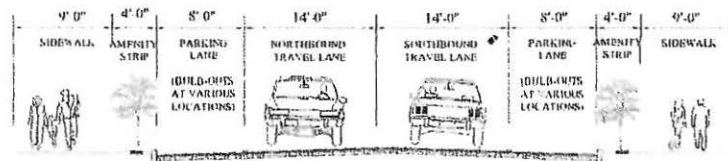
WIDENED SIDEWALKS

ALTERNATIVE 1- PROPOSED PLAN

PLANTED ISLAND

NEW CROSSWALKS

PARKING LANE (TYP.)



ALTERNATIVE 1- PROPOSED CROSS SECTION



PLANDOME ROAD-TRAFFIC AND PARKING STUDY

PROPOSED IMPROVEMENTS

TOWN OF NORTH HEMPSTEAD
NASSAU COUNTY, NY



COUNTDOWN PEDESTRIAN
SIGNAL (TYP.)

STUDY AREA

BAYVIEW AVENUE TO
COLONIAL PARKWAY



COLORED/TEXTURED
INTERSECTION

ALTERNATIVE 1- PROPOSED PLAN

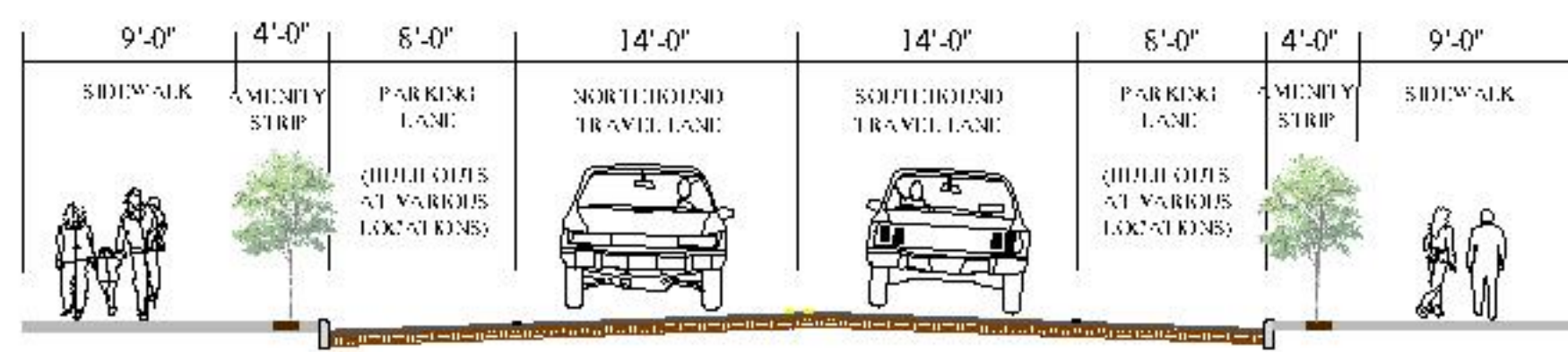
BULBOUTS (TYP.)

PLANTED ISLAND

NEW CROSSWALKS

WIDENED SIDEWALKS

PARKING LANE (TYP.)



ALTERNATIVE 1- PROPOSED CROSS SECTION





PLANDOME ROAD-TRAFFIC AND PARKING STUDY PROPOSED IMPROVEMENTS

TOWN OF NORTH HEMPSTEAD
NASSAU COUNTY, NY



COUNTDOWN PEDESTRIAN
SIGNAL (TYP.)

STUDY AREA

BAYVIEW AVENUE TO
COLONIAL PARKWAY



COLORED/TEXTURED
INTERSECTION

BULBOUTS (TYP.)

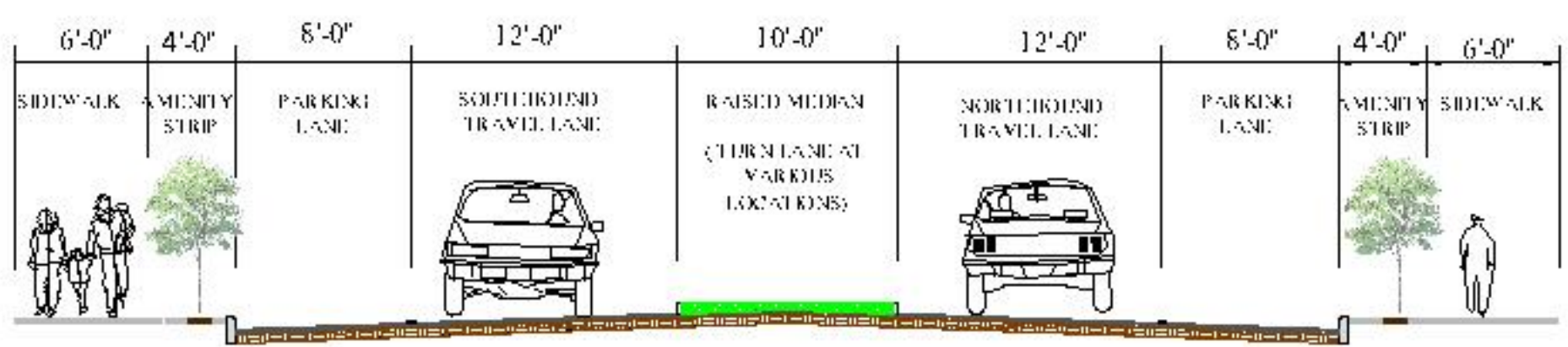
RAISED MEDIAN (TYP.)

ALTERNATIVE 2- PROPOSED PLAN

PLANTED ISLAND

NEW CROSSWALKS

PARKING LANE (TYP.)

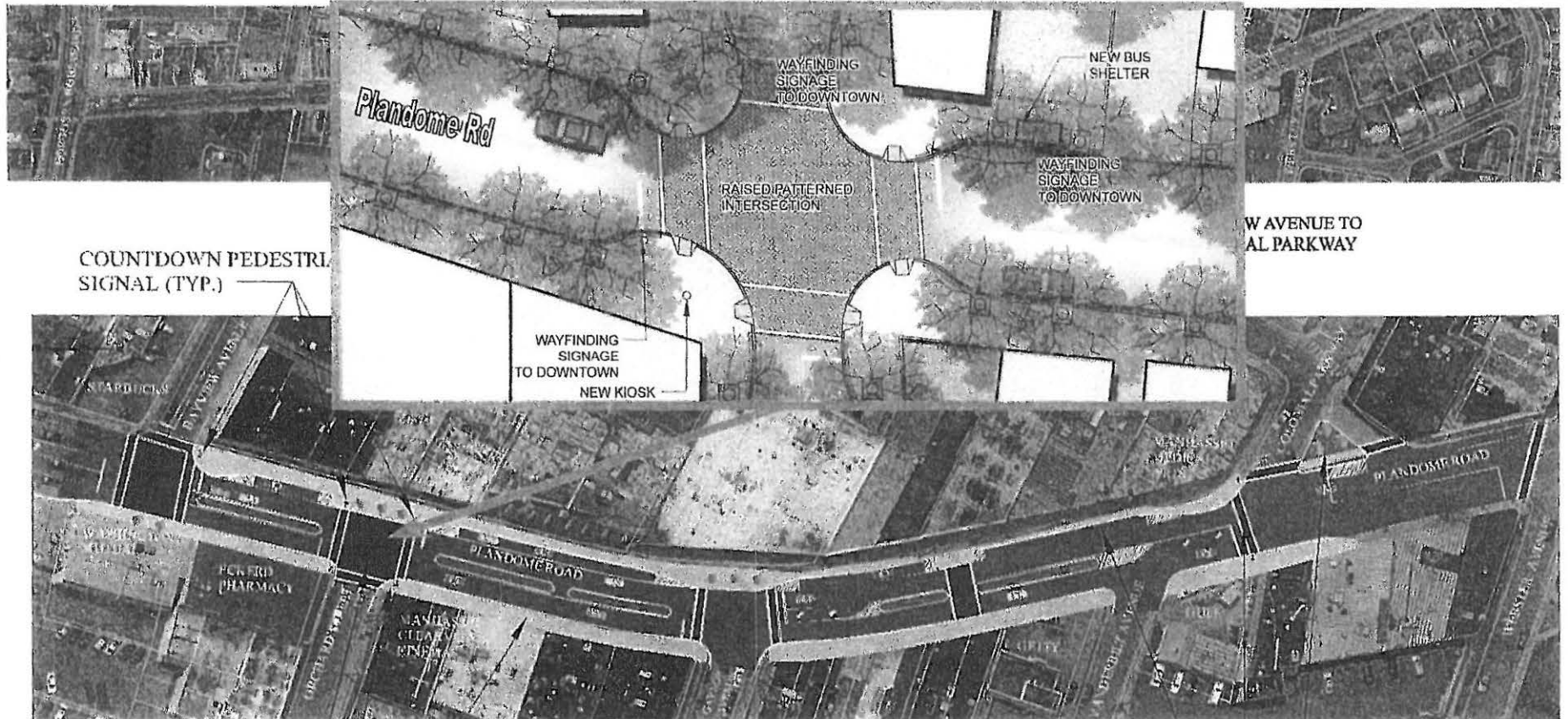


ALTERNATIVE 2- PROPOSED CROSS SECTION



PLANDOME ROAD TRAFFIC & PARKING STUDY

Proposed Improvements

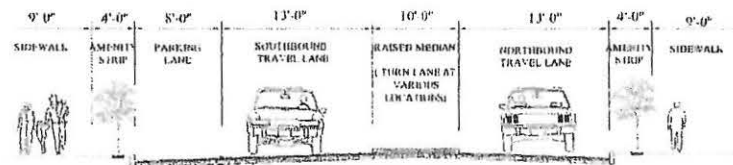


ALTERNATIVE 3- PROPOSED PLAN

COLORED/TEXTURED INTERSECTION

BULBOUTS (TYP.)

WIDENED SIDEWALKS



PLANTED ISLAND

NEW CROSSWALKS

PARKING LANE (TYP.)

ALTERNATIVE 3- PROPOSED CROSS SECTION



PLANDOME ROAD-TRAFFIC AND PARKING STUDY

PROPOSED IMPROVEMENTS

TOWN OF NORTH HEMPSTEAD
NASSAU COUNTY, NY



COUNTDOWN PEDESTRIAN
SIGNAL (TYP.)

STUDY AREA

BAYVIEW AVENUE TO
COLONIAL PARKWAY



COLORED/TEXTURED
INTERSECTION

ALTERNATIVE 3- PROPOSED PLAN

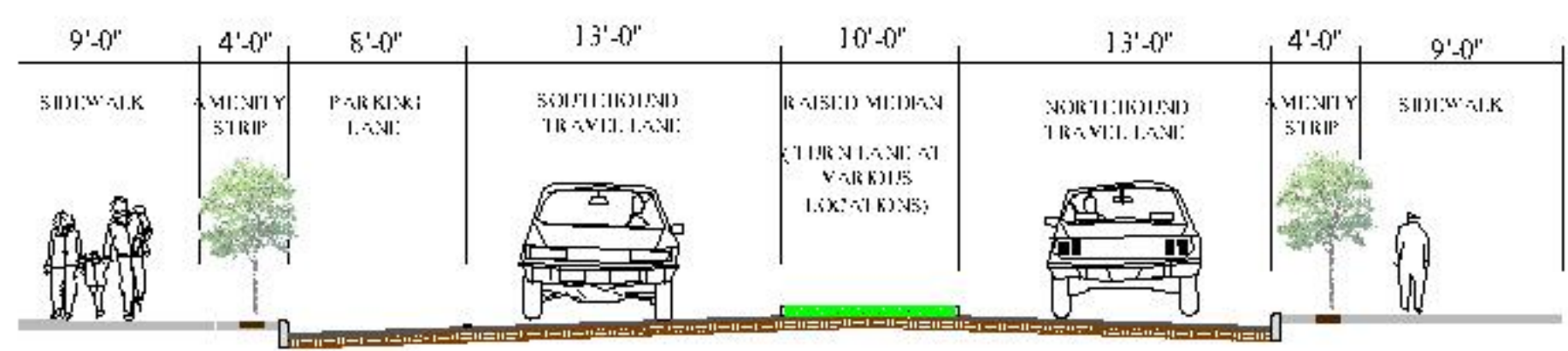
BULBOUTS (TYP.)

PLANTED ISLAND

NEW CROSSWALKS

WIDENED SIDEWALKS

PARKING LANE (TYP.)



ALTERNATIVE 3- PROPOSED CROSS SECTION



PLANDOME ROAD TRAFFIC & PARKING STUDY

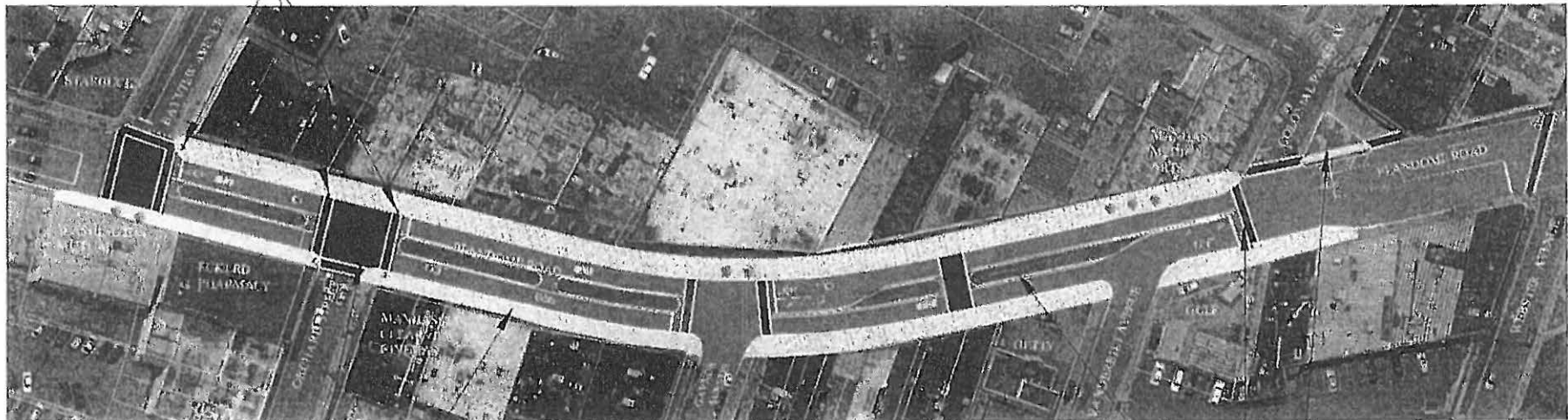
Proposed Improvements



STUDY AREA

BAYVIEW AVENUE TO
COLONIAL PARKWAY

COUNTDOWN PEDESTRIAN
SIGNAL (TYP.)



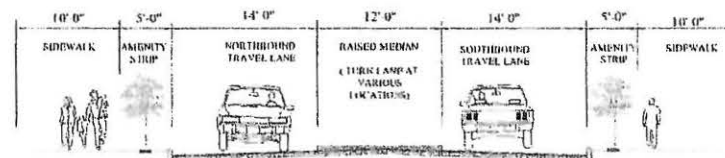
COLORLED/TEXTURED
INTERSECTION

WIDENED SIDEWALKS

ALTERNATIVE 4- PROPOSED PLAN

PLANTED ISLAND
NEW CROSSWALKS

RAISED MEDIAN
(TYP.)



ALTERNATIVE 4- PROPOSED CROSS SECTION

PLANDOME ROAD TRAFFIC & PARKING STUDY

RECOMMENDATIONS

To improve traffic operations:

1. Improve traffic signal timings along Plandome Road based on the traffic signal analysis. *(short-term)*
2. Re-stripe the southbound approach of Plandome Road at Northern Boulevard to extend the southbound right-turn storage bay. *(short-term)*
3. Re-stripe Plandome Road to add northbound and southbound left-turn bays at the Manhasset Avenue/Andrew Street intersection. *(short-term)*
4. Re-stripe the northbound Plandome Road to provide a right-turn lane at Park Avenue. *(short-term)*
5. Re-stripe southbound Plandome Road between Orchard Street and LIRR station driveway to allow two travel lanes in this section. *(mid-term)*



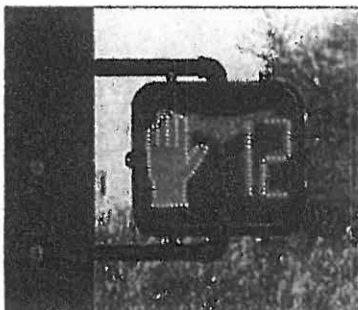
STUDY AREA

PLANDOME ROAD TRAFFIC & PARKING STUDY

RECOMMENDATIONS

To improve vehicular and pedestrian safety :

1. Improve signage for pedestrians - crossings/informational. (*short-term*)
2. Install pedestrian countdown signals at signalized intersections. (*short-term*)
3. Construct bulbouts at intersections and critical midblock locations. (*mid-term*)
4. Install high visibility crosswalks at signalized intersections along Plandome Road. (*mid-term*)
5. Construct wider sidewalks along Plandome Road between Park Avenue and Colonial Parkway.
6. Construct a pedestrian walkway between Plandome Road and the municipal parking lots on Locust Place to provide more convenient access to the corridor. (*long-term*)

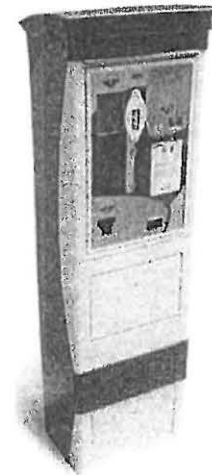


PLANDOME ROAD TRAFFIC & PARKING STUDY

RECOMMENDATIONS

To improve parking conditions:

1. Enforce on- and off-street parking restrictions. (*short-term*)
2. Improve signage to public parking areas. (*short-term*)
3. Prohibit on-street parking on Gaynor Avenue, Orchard Street, Bayview Avenue, George Street, Memorial Place and Dennis Street in the vicinity of Plandome Road. (*mid-term*)
4. Implement metered on-street parking along Plandome Road. (*mid-term*)
5. Implement uniform parking fees (if any) in lots for shoppers to prevent overcrowding in less expensive lots. (*mid-term*)



PLANDOME ROAD TRAFFIC & PARKING STUDY

RECOMMENDATIONS

To improve parking conditions:

6. Obtain agreements with the private owners to utilize its off-street lots for overflow from the Town lots, if necessary. (*mid-term*)
7. Improve the layout of the Town / Business lot between Andrew and George Streets. (*mid-term*)
8. Improve the layout and consolidate driveways at the commercial lot between Maple Place and Orchard Street. (*mid-term*)
9. Reconfigure the parking layout at Starbucks to eliminate backing out onto Bayview Avenue. Implement angled parking or eliminate on-site parking entirely. (*mid to long-term*)
10. Construct a multi-level parking garage at the existing LIRR station or municipal parking lots on Locust Place. (*long-term*)



PUBLIC MEETING

March 15, 2007

Thank You!

PLANDOME ROAD TRAFFIC & PARKING STUDY

**Northern Boulevard (NY 25A) to Webster Avenue
Manhasset, Town of North Hempstead
Nassau County**

